

### Radiant Heat Tester, HILAB model H048

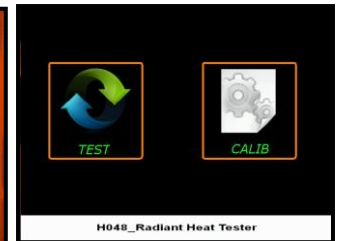
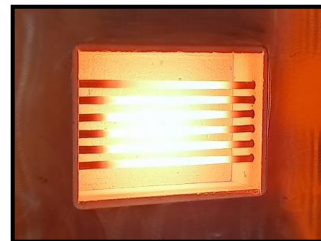


**Purpose** – Determine the behavior of the materials used in protective clothing when exposed to a radiant heat source, according EN ISO 6942.

The tests are performed on single or multi-layer textiles intended to be used in heat protective clothing.

The test consists of two methods that can be performed separately or complementarily. In method A, the specimen is exposed to radiant heat for a certain time after which the surface and the constituent layers are analyzed.

In method B the specimen is mounted on the calorimeter under a controlled tension and then exposed to the radiant heat source.



The time required for the temperature read by the calorimeter to rise by 12 ° C (t12) and 24 ° C (t24) is then recorded.

The source of radiant heat is a compact block with six special resistances supported by a structure of high isolating material.

The system controls the heat radiation, the time of the exposure and temperature, etc. All parameters can be inserted through the console and all test results are displayed after the test.

The program has a routine to make the equipment calibration, allowing the definition of the distance correspondent to each level of the energy (5, 10, 20, 40, 80 Kw/m<sup>2</sup>).

|  |   |
|--|---|
| <b><u>This equipment fulfils EC safety standards.</u></b><br>A conformity certificate is issued          | Certificate of conformity with test standards and a Workshop certificate are issued |
| <b><u>The origin of this equipment is PORTUGAL.</u></b><br>A certificate will be issued at dispatch time | <b>Operation manual is delivered with equipment</b>                                 |

| TECHNICAL DATA              |       |                 | Notes   |
|-----------------------------|-------|-----------------|---|
| Characteristics             |       |                 |   |
| Voltage                     | (VAC) | 2 x 400 ± 10    | <b>Installation:</b><br>Machine must be installed in a rigid and leveled place. |
| Frequency                   | (Hz)  | 50              |   |
| Power                       | (KW)  | 7               |   |
| Compressed air              | (bar) | 5               |   |
| Dimensions (W x D x H)      | (mm)  | 1250x 600x 1450 |   |
| Net Weight (including base) | (Kg)  | 85              |   |

Due continuous technical development, we reserve the right to introduce product changes, without previous notice.

## **HILAB - Test Equipments & Consulting**

Rua 16 de Maio, 308

3700-100 S. João da Madeira – Portugal

Tel. 00 351 916927147 – emails: [p.silva@hilab.pt](mailto:p.silva@hilab.pt)